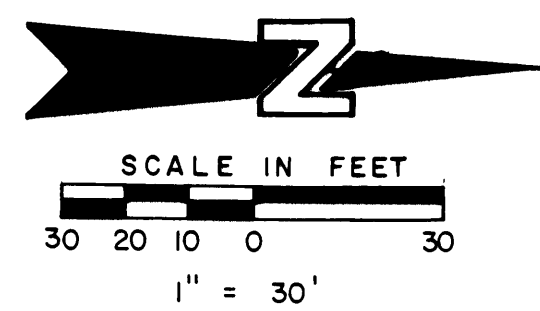
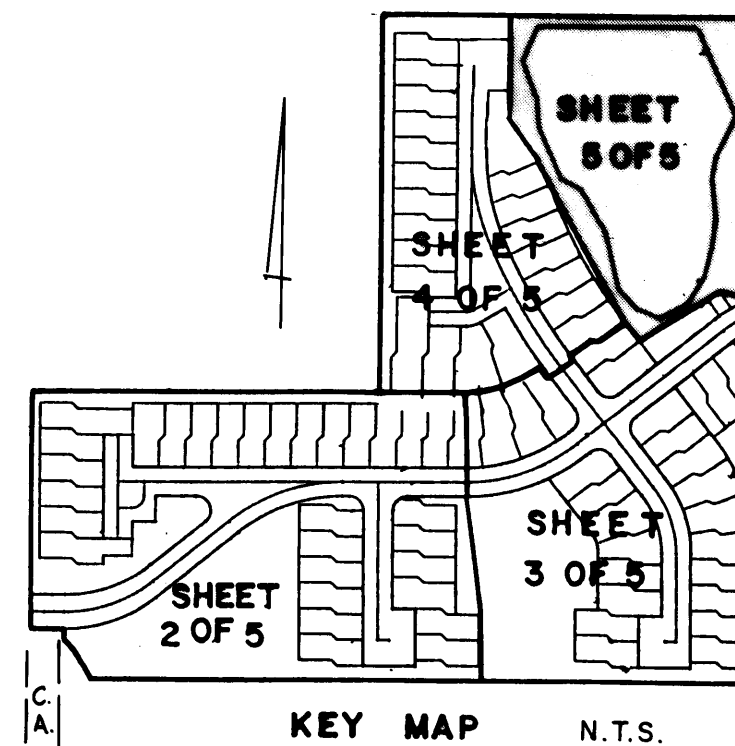


# A PLAT OF PALM POINTE AT MARTIN DOWNS



BEING PLAT NO. 56 OF MARTIN DOWNS P.U.D. LYING IN SECTION 13, TOWNSHIP 38 S, RANGE 40 E, BEING A REPLAT OF A PORTION OF TRACTS 46, 51 AND 52, PLAT OF PALM CITY FARMS, AS RECORDED IN PLAT BOOK 6, PAGE 42 PALM BEACH (NOW MARTIN) COUNTY, FLORIDA.



I, MARSHA STILLER, CLERK OF THE CIRCUIT COURT OF MARTIN COUNTY, FLORIDA, HEREBY CERTIFY THAT THIS PLAT WAS FILED FOR RECORD IN PLAT BOOK 14, PAGE 12, MARTIN COUNTY, FLORIDA, PUBLIC RECORDS, THIS 26 DAY OF December, 1976.

MARSHA STILLER,  
CLERK CIRCUIT COURT  
MARTIN COUNTY, FLORIDA.

BY: *Deborah Longton*  
DEPUTY CLERK

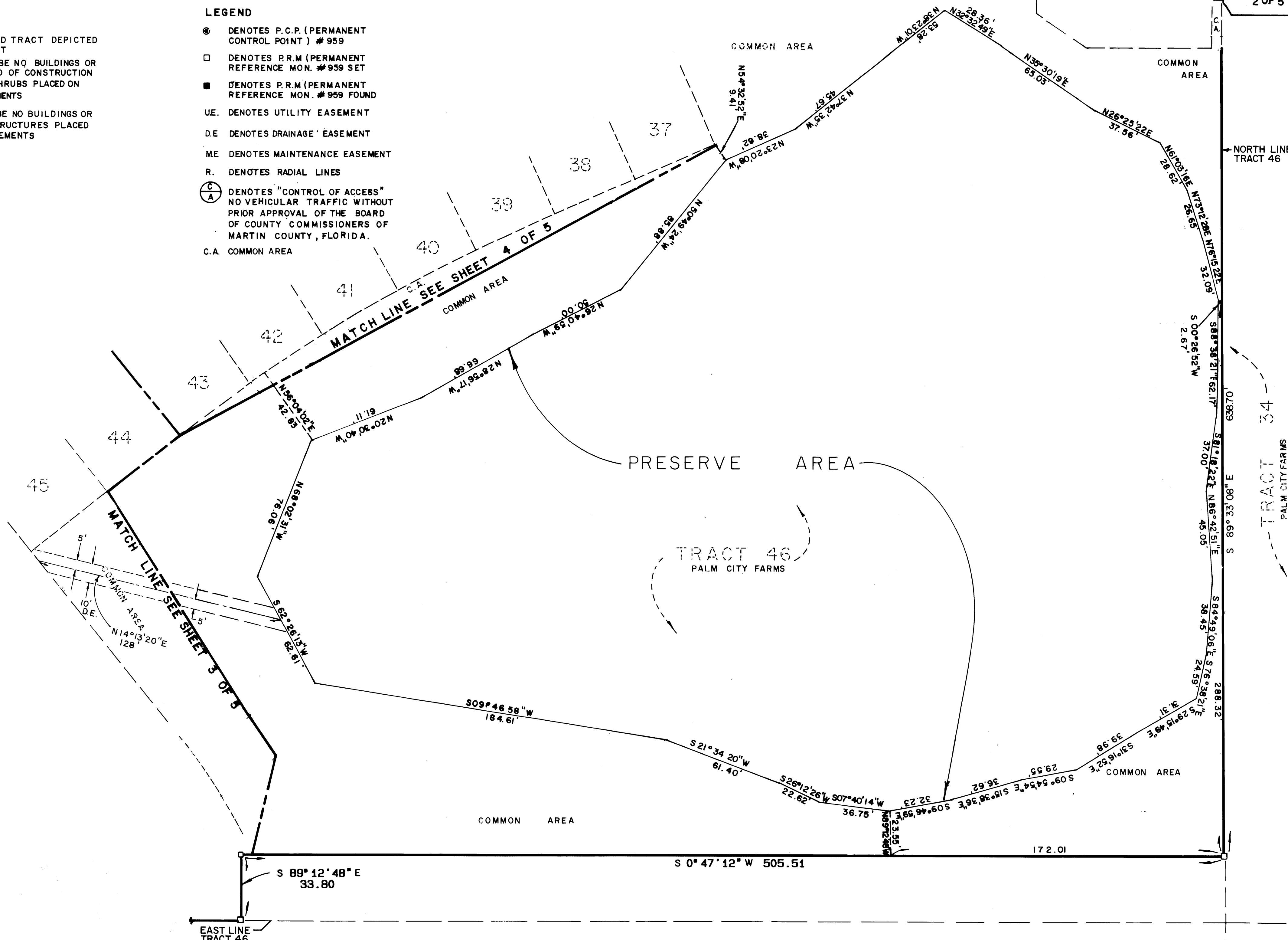
FILE NO. 1218436

(CIRCUIT COURT SEAL)

**NOTES**  
 • EACH NUMBERED TRACT DEPICTED HEREON IS A LOT  
 • THERE SHALL BE NO BUILDINGS OR ANY OTHER KIND OF CONSTRUCTION OR TREES OR SHRUBS PLACED ON DRAINAGE EASEMENTS  
 • THERE SHALL BE NO BUILDINGS OR PERMANENT STRUCTURES PLACED ON UTILITY EASEMENTS

**LEGEND**

- ⊙ DENOTES P.C.P. (PERMANENT CONTROL POINT) # 959
- DENOTES P.R.M. (PERMANENT REFERENCE MON. # 959 SET)
- DENOTES P.R.M. (PERMANENT REFERENCE MON. # 959 FOUND)
- UE. DENOTES UTILITY EASEMENT
- DE DENOTES DRAINAGE EASEMENT
- ME DENOTES MAINTENANCE EASEMENT
- R. DENOTES RADIAL LINES
- ⊙ DENOTES "CONTROL OF ACCESS" NO VEHICULAR TRAFFIC WITHOUT PRIOR APPROVAL OF THE BOARD OF COUNTY COMMISSIONERS OF MARTIN COUNTY, FLORIDA.
- C.A. COMMON AREA



TRACT 34  
 PALM CITY FARMS  
 P.B. 6, PG. 42  
 P.B. (NOW MARTIN) CO., FL.

TRACT 47  
 PALM CITY FARMS  
 P.B. 6, PG. 42  
 P.B. (NOW MARTIN) CO., FL.

LINDAHL, BROWNING FERRARI & HELLSTROM, INC. CONSULTING ENGINEERS, PLANNERS & SURVEYORS	
P.O. BOX 727 MARTIN, FLORIDA 32968	STUART, FLORIDA 34994
5 5	